

Ground Support Equipment

The Perfect Turn Driven by Oshkosh AeroTech



For the Perfect Turn

Cargo Loaders

The Ranger™ and best selling Commander™ series loaders and the Falcon are equipped with the HeliRoll™ convey system and feature PLC electronics with multi-language displays. Commander loaders also offer a swing-out power module. Oshkosh AeroTech loaders are capable of operating on lower and main aircraft decks on a wide variety of aircraft.



Transporters

The CLT-8 functions as both a baggage container transporter and loader, allowing one worker to perform loading and unloading operations. Its sleek design allows the system to operate safely in confined areas common to A319/320 operations.

The heavy-duty CPT-7 moves cargo efficiently while reducing ramp congestion. Freight can be loaded fore, aft or on the side.



Steps

Our self-propelled passenger steps have a chassis specifically designed for this application.

The latest in diesel and electric self-propelled passenger steps brings convenience to both gates and remote stands.

Oshkosh AeroTech also offers a non-powered step for basic operations.



Aircraft Tractors

Oshkosh AeroTech conventional and towbarless tractors accommodate aircraft ranging from regional jets to the A380. The conventional tractors combine heavy-duty construction, four-wheel drive and minimal blind spots.

Lektro® towbarless tractors are easy to operate, easy to maintain, and highly reliable.



Deicers

The Tempest-i deicers feature Hydrostatic Drive and Dynamic Braking. Deicing operations can be done from an open or a closed basket using Premix or Propmix fluid systems. Boom movements are automated with EZ-Boom and Boom Auto-Park. Other key features include automated nozzle park and fan control.

Available options include:

- XR Boom (53/57 ft., 16.1/17.3 m.)
- AirFirst System
- One Person Drive System with BakTrak with either LH, RH Joystick or Steering wheel
- Smart Birdseye Camera Options
- Aircraft Proximity Detection System

Mobile PC Air and 400 Hz

Oshkosh AeroTech produces a wide range of diesel and electric powered pre-conditioned air and ground power equipment. Conditioned air units operate at temperatures, pressures, and flows to cool the entire fleet of commercial aircraft ranging from regional jets up to the A380, B787, and A350. Our mobile ground power units can sustain operations at unity power factors and are available in 90 kVA and 180 kVA sizes.



Customer Care Parts & Service Customized Aftermarket Solutions

A proactive approach to your service and parts needs. Whether your fleet consists of primarily new Oshkosh AeroTech produced mobile GSE, fixed gate equipment installations, or an aged fleet that just needs some attention, Oshkosh AeroTech has the solution.



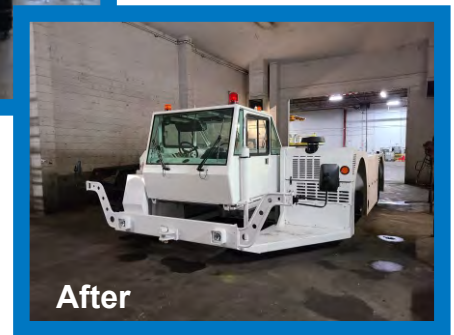
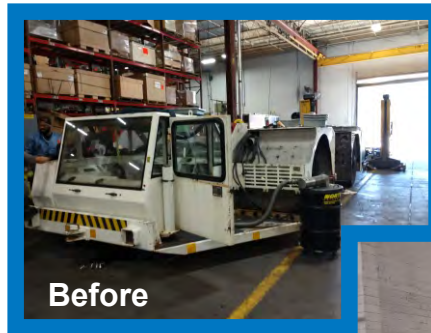
- Factory Direct Training
- Preventative Maintenance
- Fleet Analysis
- Equipment and Parts inspections

Equipment Refurbishment

GSE refurbishment includes practical and economical ways to renew your equipment.

- Based on extended life requirements
- Tailored to current condition of each unit
- 100% OEM parts guarantee
- OEM warranty and technical support

Gate equipment can be refurbished to a like-new condition, with programs for on-site upgrades or full, factory overhauls.



Online Parts Ordering and Research

Oshkosh AeroTech has established a widespread network in the parts marketplace. Sales and warehousing facilities are strategically located around the world — so the parts you need are not far away when you need them.

Genuine Parts You Can Trust!



AeroTech.GSE@oshkosh-aerotech.com

oshkosh-aerotech.com

An Oshkosh Corporation (NYSE:OSK) Business



© 2024. Oshkosh AeroTech and the Oshkosh logo are trademarks of Oshkosh Corporation. Oshkosh, Wisconsin, USA.

Specifications, descriptions, and illustrative material in this literature are as accurate as known at the time of publication and are subject to change without notice. Illustrations may include optional equipment and accessories and may not include all standard equipment. All measurements are nominal values.